



GIGS

THE HOME OF GOOD TIMES

INFORMATION PACK

UNSWROUNDHOUSE.COM

ROUNDHOUSE HAS BEEN CRAFTED TO MAXIMISE THE SPECTATOR EXPERIENCE AT YOUR EVENT, OFFERING A COHESIVE ENTERTAINMENT PRECINCT FEATURING A MAIN CONCERT HALL DIRECTLY CONNECTED TO A FULL-SERVICE BAR AND FOOD OUTLET, FLOWING OUT TO A LANDSCAPED BEERGARDEN.

Level 1 features a second dedicated bar and a balcony with incredible sightlines over the crowd and main stage, with options for VIP ticketing and upsell packages to tailor your guest experience.

Our d&b line array PA system and accompanying Digico SD12 desk deliver the exceptional audio quality the d&b V Series is known for, all while maintaining clear sightlines thanks to flown speaker positions off the main floor.

BOOKING

We offer a range of flexible venue configurations to suit the size and style of your event:

- Full venue – Up to 2,200 pax
- Main room & balcony – Up to 1,500 pax
- Downstairs only (main room, bar, and courtyard) – Up to 1,500 pax
- Main room only – Up to 1,250 pax
- Theatre style – Up to 900 seated

Package options are available and can include venue hire, staging, staffing, AV, and security.

Get in touch with our team for a tailored quote.

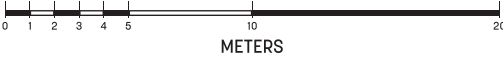
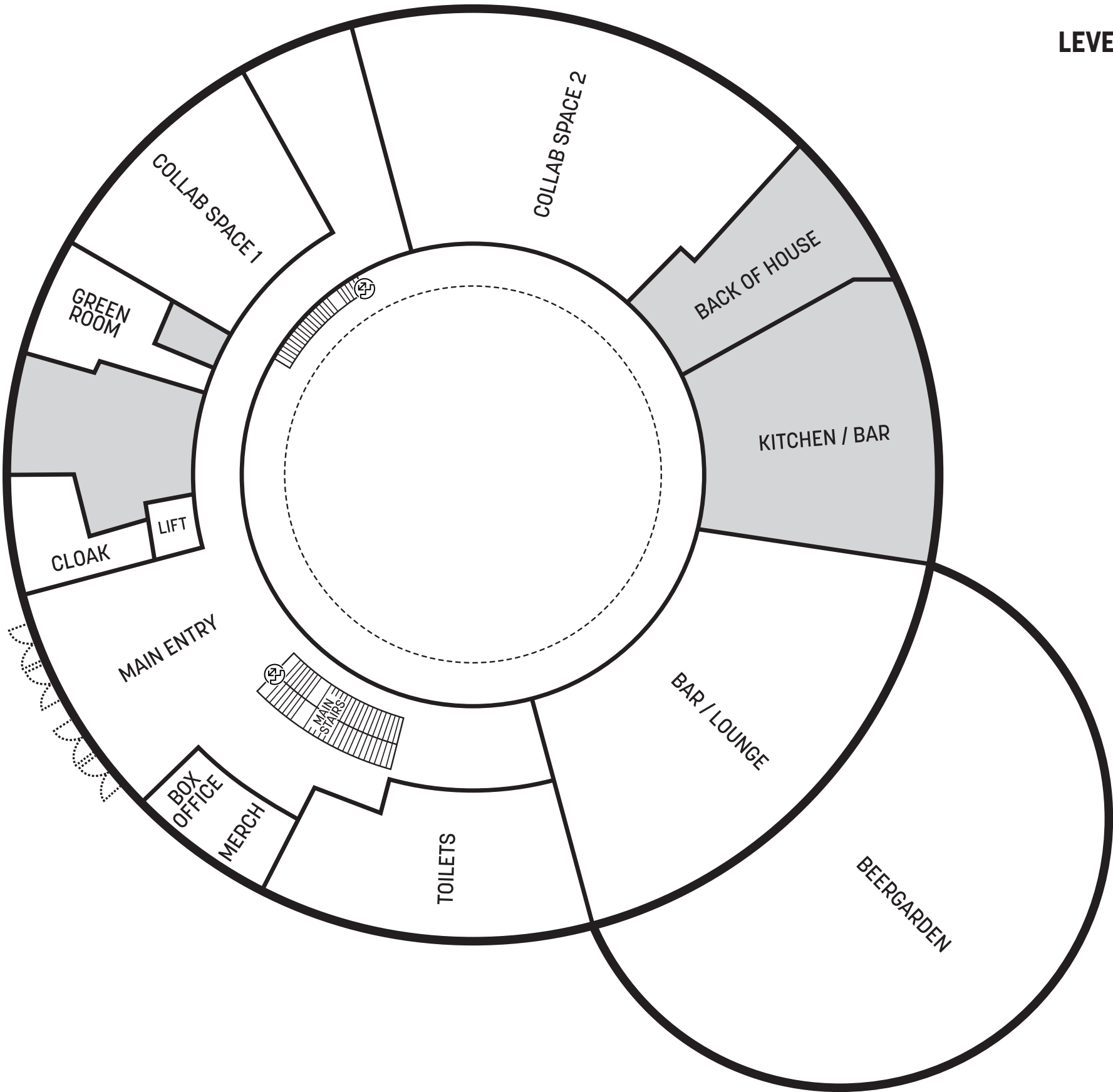
CONTACT

E: [ROUNDHOUSE@ARC.UNSW.EDU.AU](mailto:roundhouse@arc.unsw.edu.au)
T: 02 9065 0910
UNSWROUNDHOUSE.COM

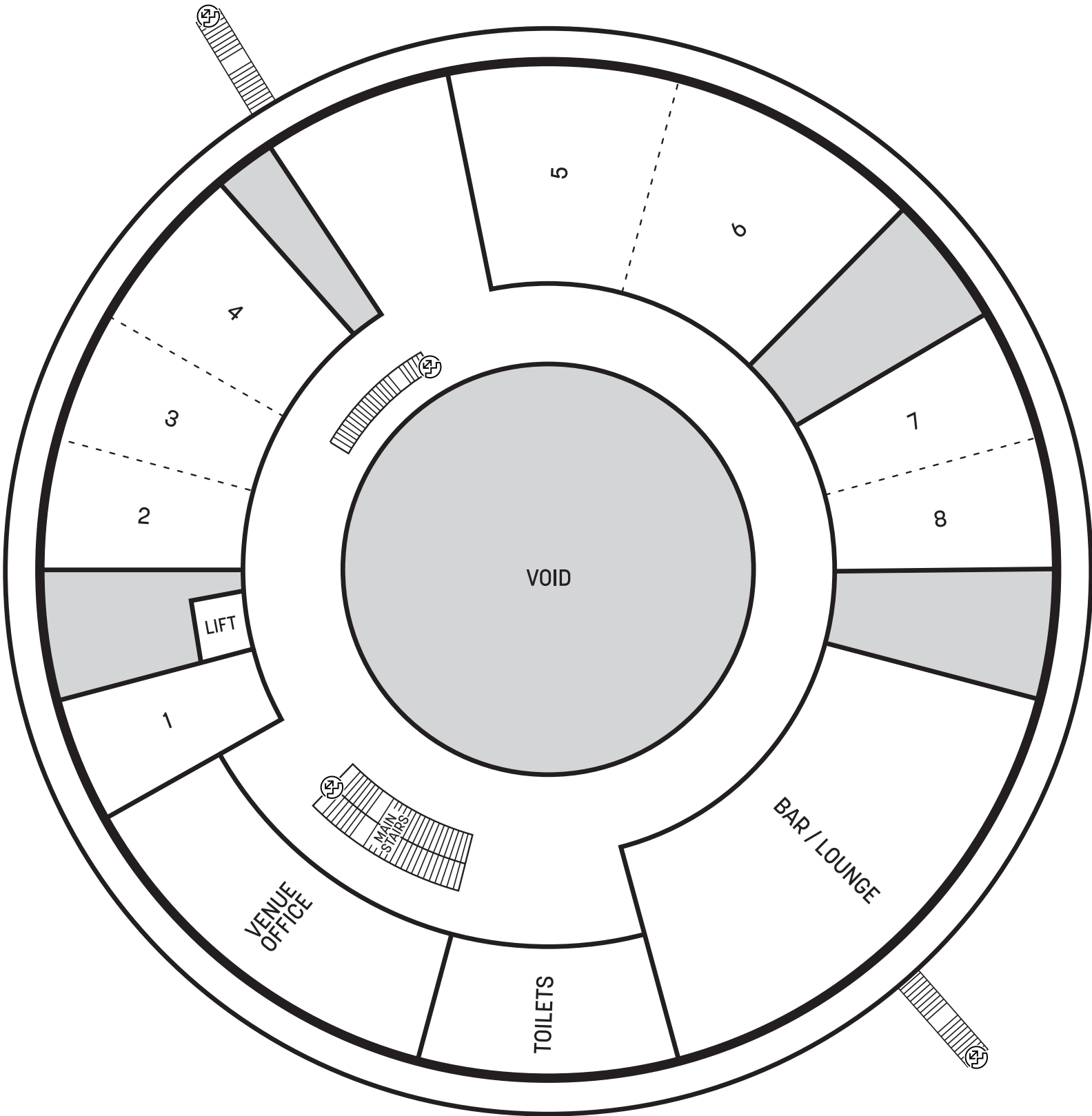


FLOOR PLANS

GROUND



LEVEL 1





AUDIO PRODUCTION EQUIPMENT LIST

CONSOLES

Front of House: Digico SD12 with Stealth 2 Core and D-rack + Waves DMI Card

Monitors: Digico SD12 with Stealth 2 Core and D-rack

Switching: XTA MX36 3-way console switcher

PA

d&b V Series flown array + fill system

Mains 6 x Vi8, 2 x Vi12 per side

Mains Subwoofers 6 x B22

Front Fill 4 x E8

Outfill 1 x V7 per side

VIP Fill 1 x V7 per side

Bar Fill 3 x E8

FOLDBACK

10 x d&b M4s on 8 sends

2 x B6 Subwoofers

DJ GEAR

4 x Pioneer CDJ 2000

2 x Pioneer DJM900 Nexus 2

4 x Pioneer CDJ 3000

1 x Pioneer DJM A9

1 x Pioneer DJM V10

A fully featured d&b V series line array is the headline item on our audio specs. Supported by a new SD12 desk from Digico.

We stock a wide range of Shure, Sennheiser, and Audix microphones, DI boxes and mic stands.

For Dance and EDM events, the venue ranges Pioneer CDJ kits and Texas headphones. Additional charges apply.

MICROPHONES

Audix

D1	1
D2	2
D4	1
D6	1

Audio-Technica

AE-2500	1
ATM350	2

sE

V-Kick	1
V-Beat	3
V7X	1
sE8	2

Sennheiser

E901	1
E604	3
E904	3
E906	3
E804	1

Shure

SM58 Switch	2
Beta 56a	3
SM57	4
SM58	4
Beta 58a	7
SM7B	1
KSM9-HS	2
SM81-LC	6
Microflex 150	3

DI

Radial J48 Active DI	10
Radial ProD2	4

STANDS

Tall boom	18
Short boom	10

LIGHTING / VISION

A GrandMA3 Light desk will drive your Roundhouse light show. In addition we have a packed range of Chauvet Mavericks & Rogues, conventional fresnels along with a suite of ETC Source Four LEDs.

Control	GrandMA3 Light Desk
Fixtures	Chauvet Maverick Force 3 Profile
	Chauvet Maverick Force S Profile
	Chauvet Rogue R2 Wash
	ETC Source 4 LED S2
	2K & 1K Fresnels
	Showline Par 150 Zoom
	Showline SL Bar 510
	Show Technology LED Blinder
	Martin Atomic Strobes
Video	Chauvet COLORdash Par-Quad 7
	PR Lighting LED Flat Pars
	Look Solutions Unique Hazer
	Look Solutions Unique Hazer
	Epson EB1300 Projector



ROUNDHOUSE

- U N S W | SYDNEY -

Kyle McLeavy - Production Manager
PO Box 173 Kingsford, NSW 2032
production@arc.unsw.edu.au
www.unswroundhouse.com

Symbol	Channels	Fixture	Mode	Count
	1101 thru 1121	Showline SL Bar 510	(6ch)	20x
	1001 thru 1024	Showline Par 150 Zoom	(6ch)	24x
	701 thru 708	Maverick Force S Profile	(47ch)	8x
	201 thru 208	Rogue R2 Wash	(33ch)	8x
	101 thru 104	Maverick Force 3 Profile	(53ch)	4x
	011 thru 014	Show Technology LED Blinder	(4ch)	4x
	021 thru 025	ETC Source Four LED S2	(6ch)	5x
	051 thru 053	Martin Atomic	(10ch)	3x
	1201 thru 1202	Look Solutions Unique Haze	Pump / Fan	2x
	Control	GrandMA Light		1x

Lighting design updated by David Cherrie
This drawing and design remains the property of Arc @ UNSW

General Notes: Version: 5 Drawn: 20/11/2025

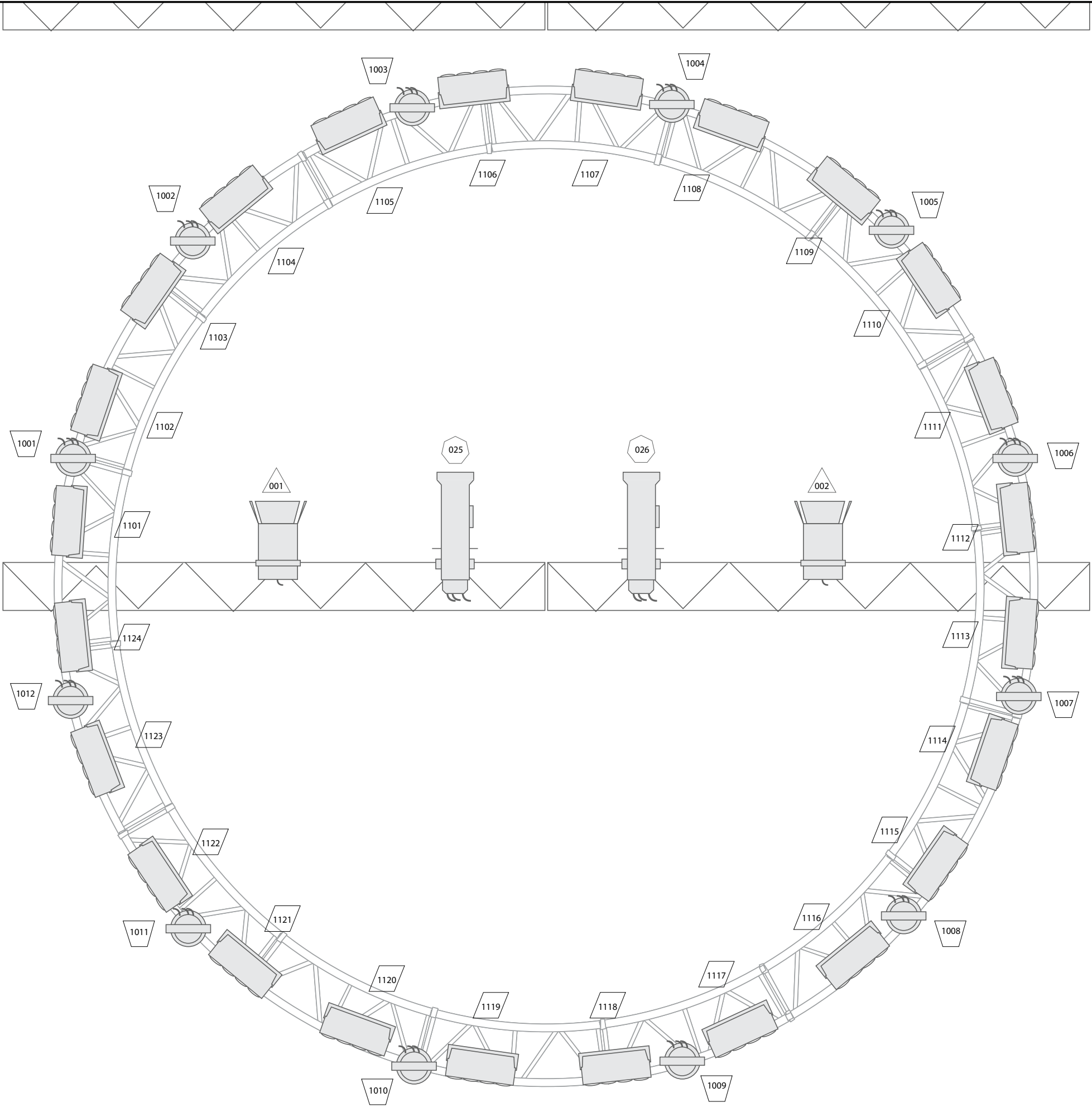
These designs and drawings are not to scale and intended as a representation only. The designer is not a licensed engineer or rigger and is not qualified to determine whether the designs and drawings meet structural, safety and building code requirements.

Contact Kyle McLeavy (details above) if this document is more than 6 months old.

All truss and bars are on motors. No haze, smoke or atmospheric effects may be used without prior management approval. No confetti, glitter or particulate effects may be used.

This document is formatted to print A3.

Center Ring Truss



LOADING ZONE

ADDRESS

Gate 2 UNSW, High St, Kensington NSW 2033

PARKING

We recommend parking in the Barker Street Car Park (Gate 14), with all-day casual visitor parking available on the upper floors.

Parking is metered from **7:30AM to 7:30PM, Monday to Friday**, and free outside these hours.

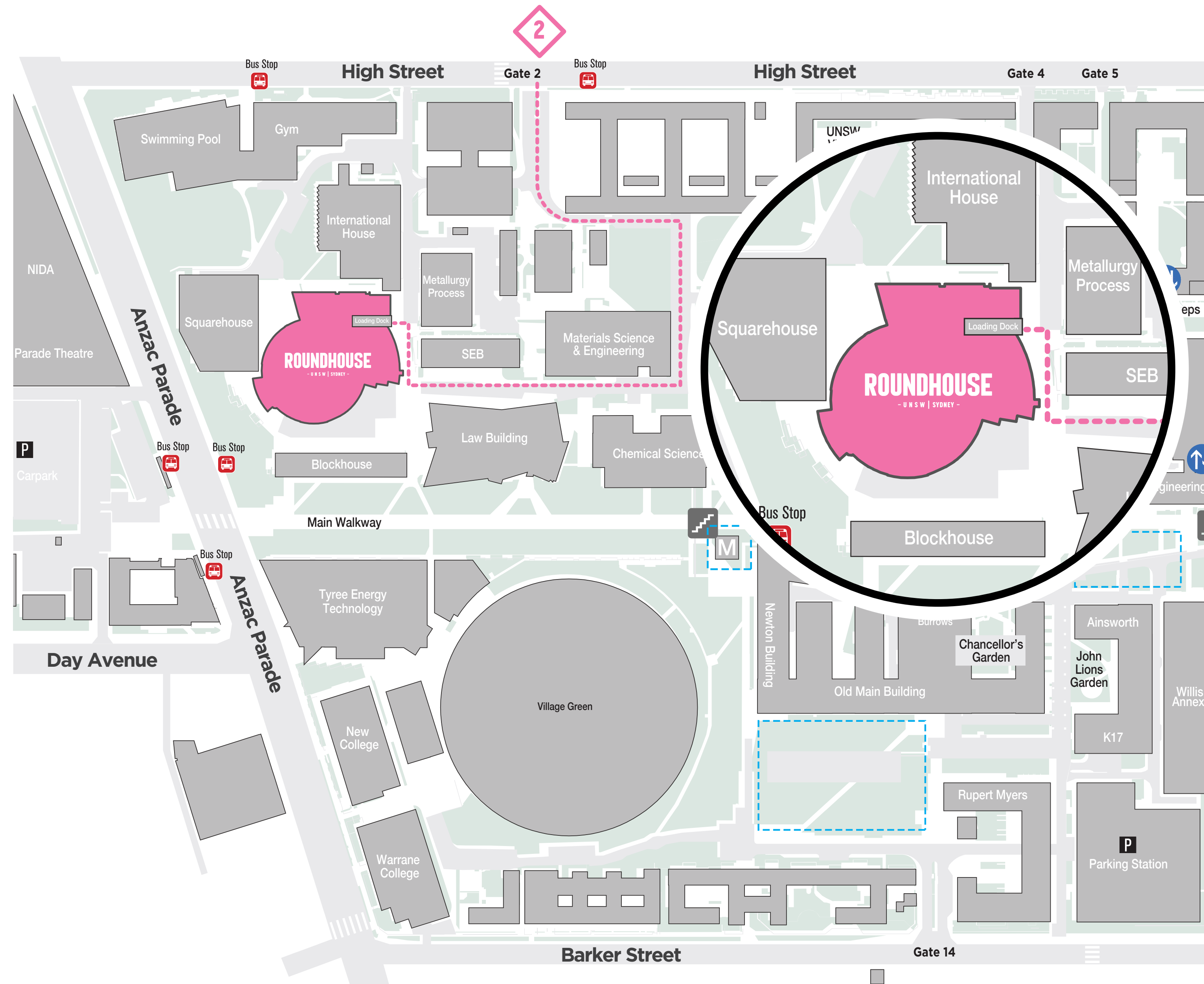
Rates: **\$15.50 for the first 2 hours (minimum), then \$4.75/hour thereafter.**

You can pay via the **CellOPark App** or at the **pay-by-plate meters** inside the car park.

If you require access to the **Roundhouse loading dock**, please contact your Event Manager to be issued a permit for temporary use.

PHONE

[02] 9065 0910



ROUNDHOUSE FACILITIES

STAGING

We can configure 60sqm of ProStage modular staging up to 1.2m in height. Standard build is 10m wide x 6m deep.

CURTAINS AND DRAPES

A curtain track fitted with fire-retardant black wool curtain runs around the main room, allowing for a smaller configuration of the space where required.

PUNTER BARRIER

We use industry standard crowd control barrier.

GREEN ROOM

We have a dedicated Green Room behind the stage, inclusive of a private shower and toilet facilities. There are additional Green Rooms available.

BOX OFFICE

A Moshtix box office is available for you to sell and distribute tickets and manage guest lists.

MERCHANDISE

A merchandise area in a prominent position near the main entry is available for you to use to maximise revenue opportunities.

SECURITY

Roundhouse has used GVMi for the best part of a decade, and we are pleased to have a partner with their level of professionalism and experience at our concerts.

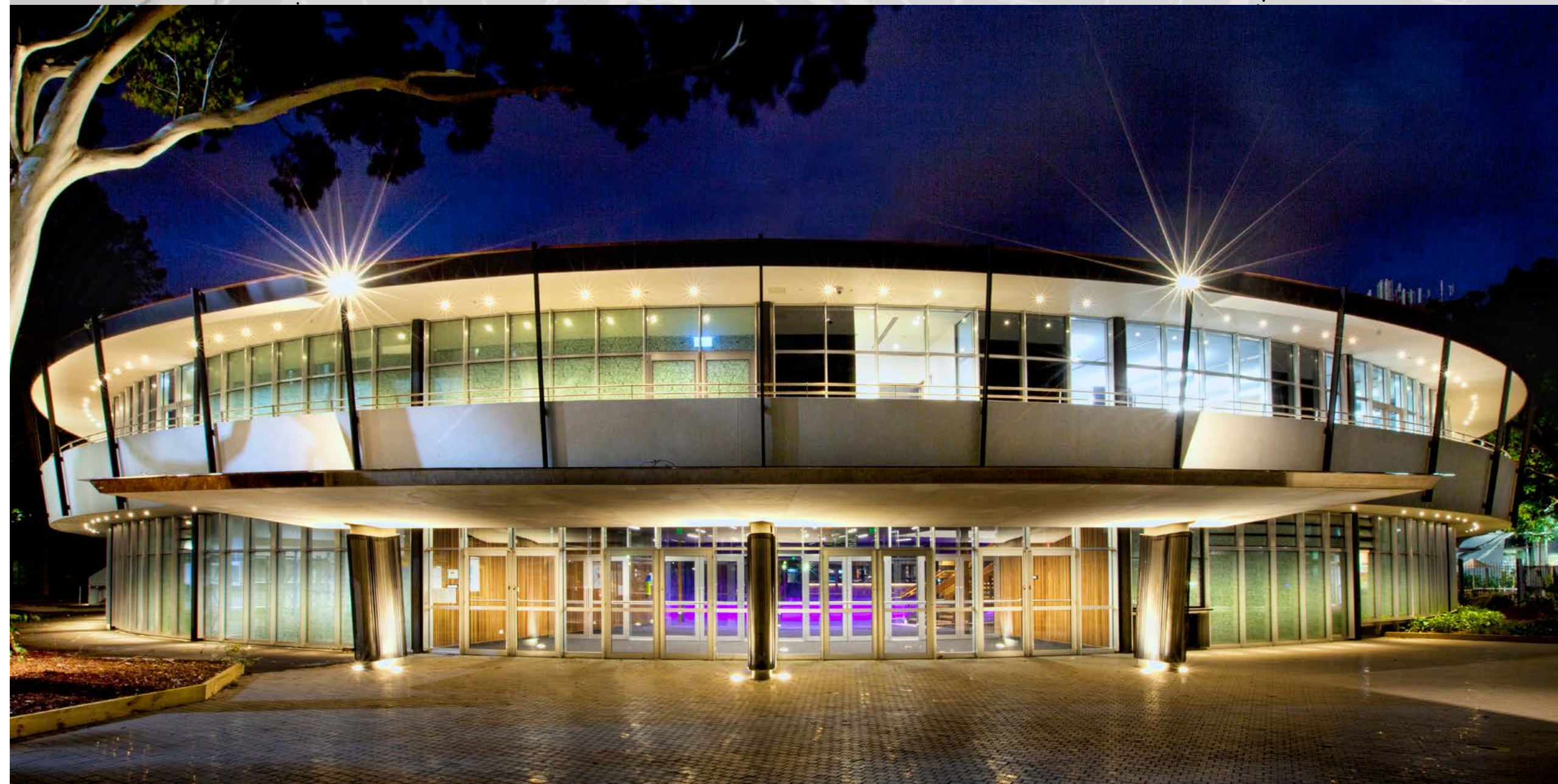
TRANSPORT

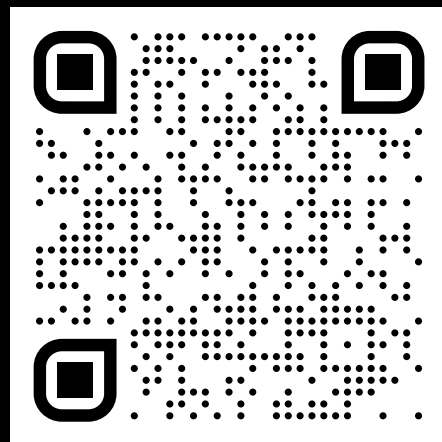
Public transport can deliver guests to the venue door on Anzac Parade, and multi-story car-parking is available within 200m.

A Light Rail stop and taxi zone are located on Anzac Parade, immediately outside the venue. On the L3 Kingsford Line, you can now arrive at our doorstep within 15 minutes from Sydney's CBD. Disembark at the UNSW Anzac Parade stop.

BUS SERVICES

The venue is accessible by multiple bus routes.





SCAN ME
{I DARE YOU}

WE WOULD LOVE TO HEAR FROM YOU.
GET IN TOUCH TO EXPLORE HOW WE CAN MAKE
YOUR NEXT EVENT A FABULOUS EXPERIENCE.

E: venue@arc.unsw.edu.au
T: (02) 9065 0910

UNSWROUNDHOUSE.COM